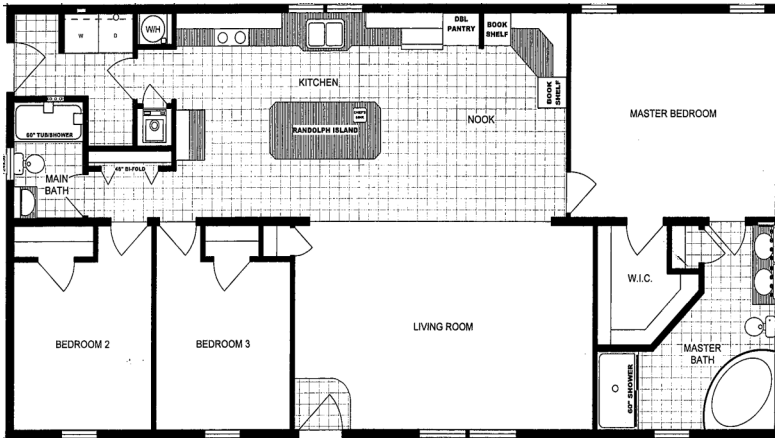




8 US Highway Route 1
 Ellsworth, Me 04605
 www.coastlinehomes.net
 207-667-0664



#4 28 x 56 Pine Grove G1784



**WE OFFER FULL GENERAL
 CONTRACTING SERVICES AND END LOAN
 AVAILABILITY**

Contact us at
ralph@coastlinehomes.net
 Or
scott@coastlinehomes.net

Plus we will work with you
 from design to financing!

Building **BUDGET FRIENDLY** homes with integrity and
30 YEARS of building **EXPERIENCE!**

Finished drywall T/O	4,090.00	Raised panel cabinet doors T/O	525.00
4-Break Axles replacing idler axles	240.00	1/2" solid maple dovetail drawers T/O	295.00
1-Extra break Axle	595.00	Stainless steel kitchen appliance package	2,095.00
1-6 panel vented furnace door w/lever (White)	99.00	1-33"x22"x8" stainless steel kitchen sink IPO std.	45.00
1-50gal. Electric hot water heater W/24" 6 panel access door	290.00	Crescent edging on kitchen counter tops	225.00
1-outside water faucet	75.00	Wind zone II specifications	1,400.00
Congo legacy woodlook vinyl flooring IPO standard vinyl	295.00	New England code	35.00
2-Standard height elongated toilet IPO standard toilet	70.00	Wire & double switch for future ceiling fan (living room)	55.00
1-9lite fiberglass rear door W/O storm	100.00	2-Telephone jacks	110.00
Increased roof pitch to 5/12 from 3/12	2,595.00	2-Tv jacks	110.00
4-Extra pair of 15" shutters in non STD. locations	160.00	1-Interior trim package (White)	995.00
Over washer/dryer cabinets for laundry room	225.00		
1-Laundry sink with base cabinet (Oak)	325.00		

*Pricing and options are subject to change without notice. We custom quote every home to ensure accurate costing.

OUR PRICING INCLUDES: DELIVERY AND SET WITHIN 75 MILES, WHITE VINYL SKIRTING AND TIE DOWNS INSTALLED Plus sales tax where applicable.

Standard Features

Interior

- Complete Fabric Drapery Package with 2" Blinds or Sheers
- Vinyl On Gypsum Wall Coverings Throughout
- Residential Ceiling Fixtures in All Bedrooms
- Switched Ceiling Light in All Walk-In Closets
- Chandelier in Each Designated Dining Area
- ½" Finished Drywall Cathedral Ceilings with Stipple Finish
- Residential Wood Molding Profiles
- Solid Oak Window Sills
- 25 oz. Textured Carpet Installed with Tack Strip & 5.5# Pad
- No Wax Vinyl Flooring by Congoleum®
- Pre-Hung 6-Panel Interior Doors Installed with 3 Hinges
- Vinyl Clad Shelving in Closets and Pantries
- Foyer Entry with Vinyl Flooring at Front Door

Cabinetry

- KCMA Approved Cabinetry Built by Blue Mountain Cabinet Co.
 - Solid Oak Cabinets with ¾" Solid Oak Face Frames
 - Cabinet Crown on Overhead Cabinets
 - Concealed Cabinet Door Hinges
 - Drawer-Over-Door Base Cabinets
 - Metal Drawer Guide System
 - Designer Coordinated Door and Drawer Pulls
 - Adjustable Shelving in Overhead Cabinets
- Shelving in All Base Cabinets

Utilities

- Miller Direct Spark Gas Furnace with Metal Access Door
- In-Floor Perimeter Heat System with Perimeter Diffusers
- Insulated Fiberglass Heat Duct w/ Sealed Crossover Connection
- 40 Gallon Electric Water Heater with Drip Pan & Exterior Drain
- PEX Hot & Cold Water Lines and Schedule 40 Drain Lines
- Enclosed Water and Drain Lines
- Plumbing for Washer
- Wire and Vent for Dryer
- Water Shut-Offs at All Fixtures
- 100 Amp Electric Service
- Hard-Wired Smoke Alarms with Battery Back-Up
- Copper Wiring Throughout
- Switched Receptacle in Living Room
- GFCI Protected Exterior Receptacle
- GFCI Protected Receptacle(s) in Wet Areas

Codes

- HUD Code
- Energy Star Compliance
- Thermal Zone III
- Wind Zone I (Wind Zone II Available as an Option)
- Green Certified (Available as an Option)

Kitchen

- 33" x 19" x 7" Deep Double Bowl Stainless Steel Sink
- Peerless by Delta® Single Lever Faucet with Sprayer
- Soffit Light Over the Sink (in most models)
- Refrigerator Overhead Cabinets
- Wilson Art® or Formica® Laminate Counter Tops, 25" Deep

Bath

- One-Piece Fiberglass Tub and Shower Units
 - 36" High Oak Vanity Cabinets with China Sinks
 - Peerless by Delta® Single Lever Faucets on all Fixtures
 - Wilson Art® or Formica® Laminate Counter Tops
 - 4" Laminate Backsplash on All Counters (Ceramic Optional)
 - Oak Medicine Cabinets and/or Mirror with 24" Strip Light
 - Broan® Lighted Exhaust Fan in Each Bath
 - 1.6 Gallon Round Front Water Saver Commode
- All Bath Fixtures are White

Exterior

- Georgia Pacific® Dutch Lap Vinyl Siding
- 1/2" x 4'x8' Insulated Foam Sheathing (installed under siding)
- Owens Corning® 3-Tab Fiberglass Roof Shingles
- Eaveguard Ice and Water Shield
- 38x82 Residential Size Fiberglass 6-Panel Front Door, No Storm
- 38x82 Residential Size Fiberglass 2-Lite Rear Door, No Storm
- Exterior Light at Each Entrance Door
- Vinyl Thermopane "Low E" Single Hung Windows
- 15" Raised Panel Shutters on Front Door Side & Right Gable End
- 6" Fascia and Soffit
- Ridge Vent

Construction

- All Wall Studs, Trusses, & Floor Joists Installed 16" On-Center
- 40# Snow Load Roof Trusses
- 7/16" OSB Roof Sheathing
- 2x6 Graded Wall Studs
- 7' 6" Sidewalls Standard (8' Sidewalls are Available)
- 2x6 Floor Joists (28' Wide) and 2x8 Floor Joists (32' Wide)
- 2x6 Perimeter Joists
- ¾" Tongue and Groove OSB Floor Decking
- R-19 Fiberglass Wall Insulation
- R-33 Blown-In Cellulose Ceiling Insulation (single-section homes)
- R-38 Blown-In Cellulose Ceiling Insulation (multi-section homes)
- Combination of R-19 and R-27 Floor Insulation
- Matewall Sealed with Double Center Seal Gasket
- 10" or 12" I-Beam Foundation Frame